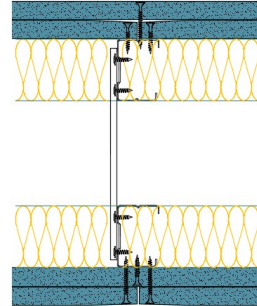


## TWC50-B-60(2x50)(200) - SPEEDLINE System Data Sheet - Version V1 (24-10-23)

Twin SPEEDLINE 50mm 'C' Stud Partition @600mm Ctrs, with 2x BG Gyproc 15mm SoundBloc each side, 50+50mm APR



### System Performance Breakdown

Fire Resistance:

BS476 Part 22:1987:

Test Ref & Date or Applied Ref & Report:

Max Height:

Thickness:

Duty Grade: BS 5234: Part 2:1992:

Sound Insulation:

90/90 Minutes (Integrity/Insulation).

**BTC 17440F - BRE Report P102396-1011A**

**Refer to Speedline Specification Clause**

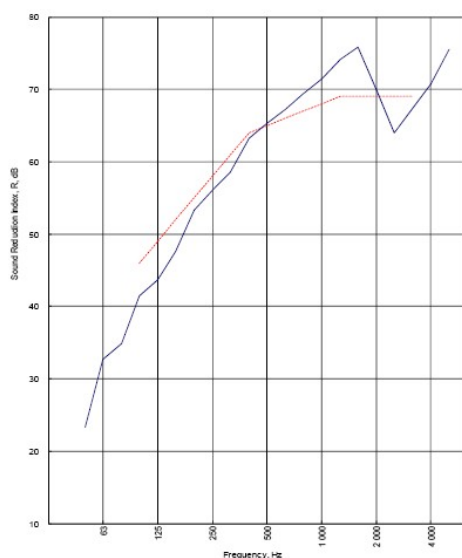
**200 mm.** (At Base Track, Excluding Finishes)

**Severe - Annexes A-F**

**65  $R_w$ dB, -8Ctr** Date Tested or Assessed Against - 01/03/2015

Test Code:  
H19027AA  
Test Date:  
04/03/2015

Freq. Hz	R dB
50	23.3
63	32.7
80	34.9
100	41.4
125	43.7
160	47.6
200	53.3
250	56.1
315	58.6
400	63.2
500	65.3
630	67.2
800	69.4
1000	71.4
1250	74.1
1600	75.8
2000	69.9
2500	64.0
3150	67.4
4000	70.7
5000	75.5



Rating according to BS EN ISO 717-1:2013	<b><math>R_w</math> (C;Ctr) = 65 (-2;-8) dB</b>		
Evaluation based on laboratory measurement results obtained by an engineering method:	Max dev. 5.3 dB at 125 Hz		
	$C_{50-3150} = -6$ dB	$C_{50-5000} = -5$ dB	$C_{100-5000} = -1$ dB
	$C_{10-50-3150} = -18$ dB	$C_{10-50-5000} = -18$ dB	$C_{10-100-5000} = -8$ dB

TESTED AT ONE OF THE UKAS ACCREDITED LABORATORIES BELOW

B.T.C  
(H-Ref on Graph)



B.R.E



AIRO



S.R.L



Customer: Voestalpine Metsec Plc Dry Lining

BTC 19027A: Page 10 of 13



SPEEDLINE Drywall Systems, Adsetts House, 16 Europa View, Sheffield Business Park, Sheffield, S9 1XH.

Tel: 0114 231 8030.

Email: [enquiries@speedlinedrywall.co.uk](mailto:enquiries@speedlinedrywall.co.uk)

(As per the requirements set out in ISO/IEC 17025:2017 regarding test data the results stated have been carried out by voestalpine Metsec plc as part of the contract to supply Speedline Metal Sections to SIG Plc)